

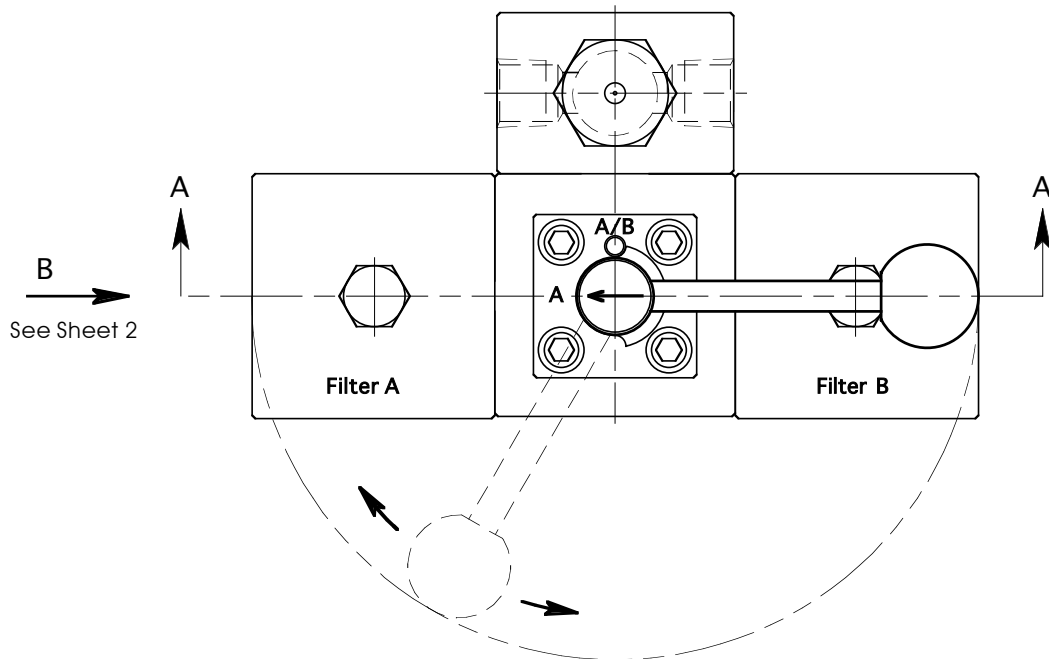
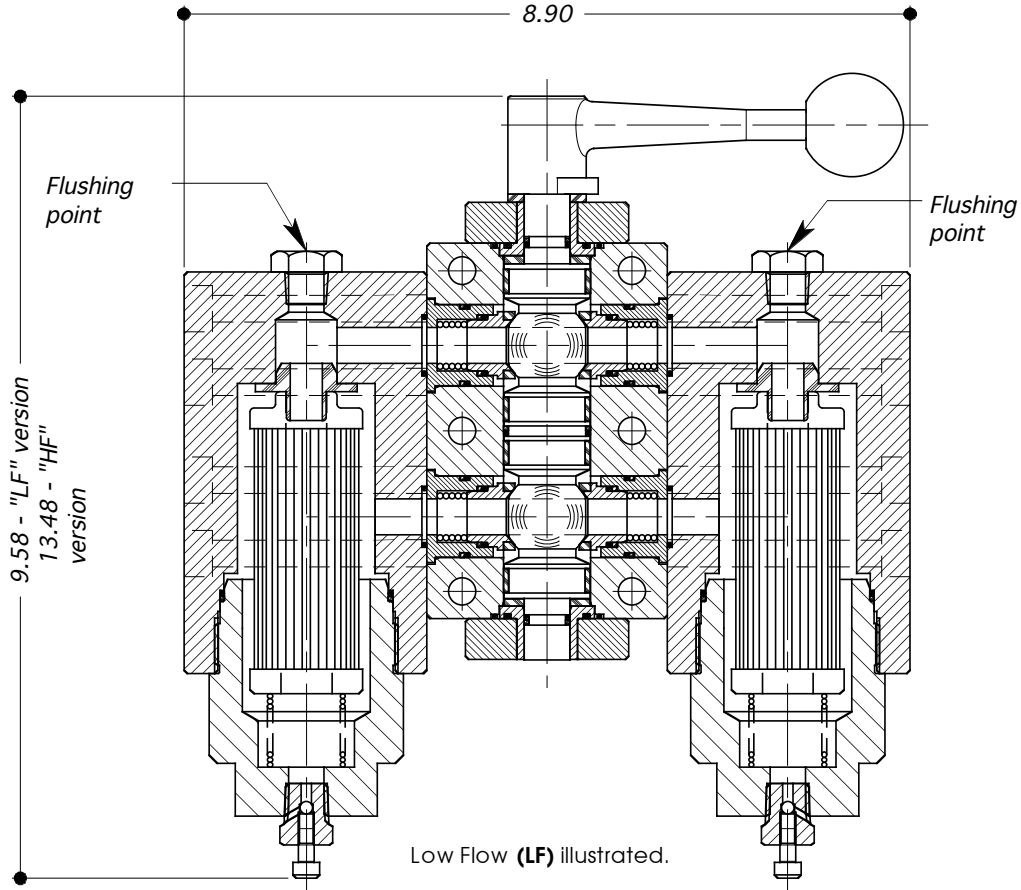
DUPLEX FILTER TYPE: DF50

Sheet 1 of 2



Valves Ltd

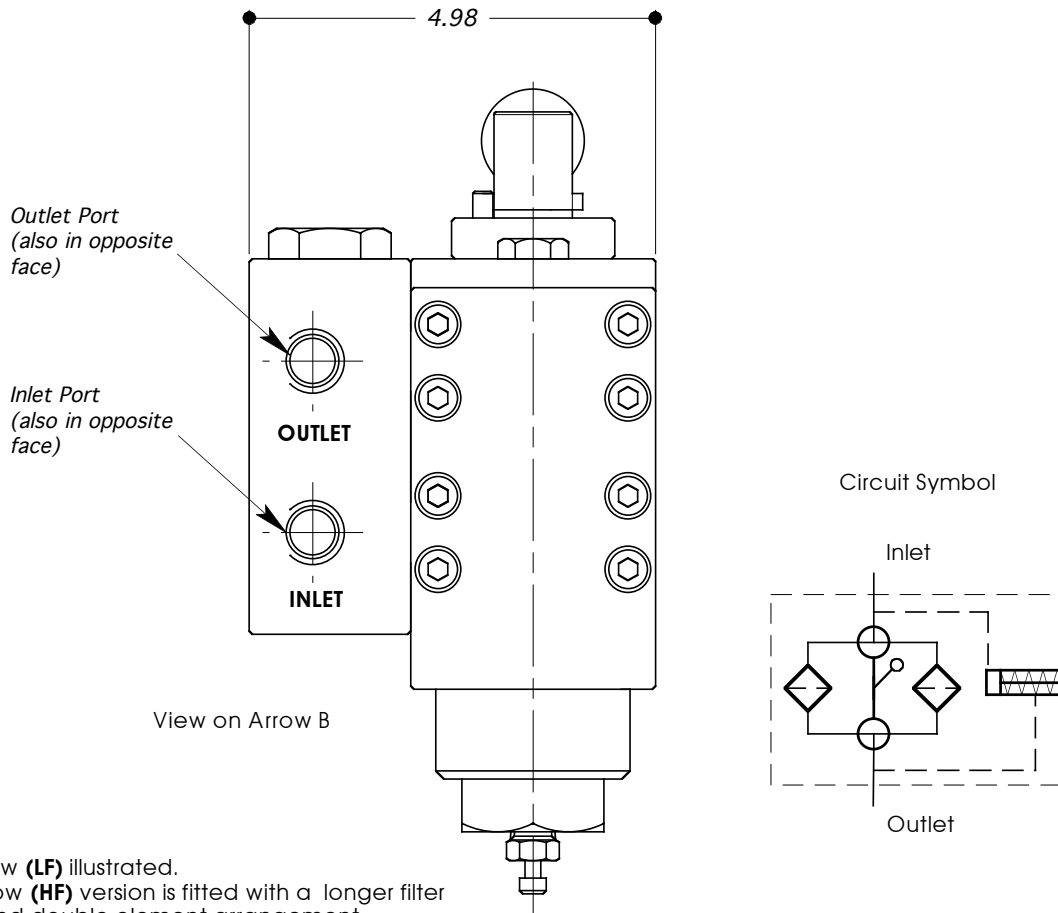
- STAINLESS STEEL (316 / 1.4404)
- SUITABLE FOR LIQUID USE.
- "POP-OUT" FILTER CLOGGING INDICATOR.
- ALL DIMENSIONS IN INCHES.



DUPLEX FILTER TYPE: DF50 Sheet 2 of 2



- STAINLESS STEEL (316 / 1.4404)
- SUITABLE FOR LIQUID USE.
- "POP-OUT" FILTER CLOGGING INDICATOR.
- ALL DIMENSIONS IN INCHES.



Low Flow (LF) illustrated.
High Flow (HF) version is fitted with a longer filter case and double element arrangement.

TECHNICAL SPECIFICATION		ORDERING EXAMPLE
Filter Type:	DF50	DF50
Porting / Connection Options:	P = BSP (Parallel) N = NPT (Taper)	N
Micron Rating:	3, 5, 10, 20, 50M (Microns)	20M
Indicator Type:	"DP" = Visual 'pop-out' "BP" = Visual 'pop-out' with by-pass	DP
Differential Press (DP) Bar:	3, 5 or 7	7
Flow Rate:	30 L/Min (Standard) ("HF" High Flow = 50 L/Min)	—
Max. Working Pressure: (Liquid)	6,000 psi	6K
Port Size:	1/2"	
Cv Value: (See Note)	2.37 / 2.97	
Dry Weight (kg)	20	
Seal Material:	Viton (other materials available by request)	
Working Temperature Range:	-10°C to +110°C	

Cv Value Note: The figures quoted are for the basic assembly without elements fitted. The first figure for single filter selected and second figure for both filters selected. For total loss including elements forward details of Specific Gravity, Viscosity and Flow Rate to our Technical Department.